

**Invited Speakers**

- **Thomas Erlebach**  
Department of Informatics, University of  
Leicester, UK
- **Madhav Marathe**  
Network Dynamics and Simulation Science  
Laboratory (NDSSL), Biocomplexity Institute,  
Virginia Tech, USA
- **Aravind Srinivasan**  
Department of Computer Science, University  
of Maryland, USA
- **Caren Tischendorf**  
Institute of Mathematics, Humboldt University  
of Berlin

**Chairs**

- **Sven Krumke**  
TU Kaiserslautern
- **Karl-Heinz Küfer**  
Fraunhofer ITWM
- **Helmut Neunzert**  
Fraunhofer ITWM

**Venue**

Auditorium at Fraunhofer Institute for Industrial  
Mathematics ITWM  
Fraunhofer-Platz 1  
67663 Kaiserslautern

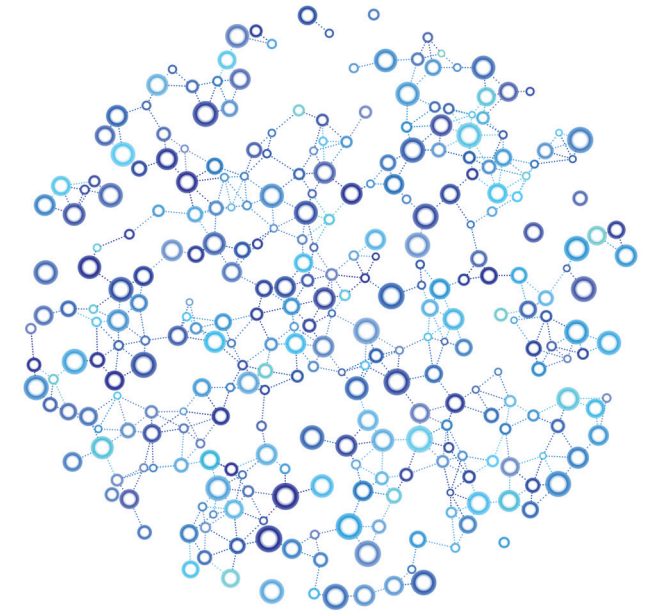
**Participation**

Everybody interested in the subjects is cordially  
invited to the lectures. Registration is not required.  
Admission free.

Participation of the closed sessions by personal  
invitation only.

**Contact**

For further information please contact:  
Sylvia Gerwalin  
E-mail: [sylvia.gerwalin@itwm.fraunhofer.de](mailto:sylvia.gerwalin@itwm.fraunhofer.de)  
Phone: +49 631 31600-4424



Felix Klein Academy  
International Autumn Workshop

## Networks and Uncertainty

September 27<sup>th</sup> – 29<sup>th</sup>, 2017

Fraunhofer Institute for Industrial Mathematics ITWM  
Fraunhofer-Platz 1, Kaiserslautern



**FELIX KLEIN**  
ZENTRUM FÜR  
MATHEMATIK

Dear colleagues and students,

Networks are one of the most relevant structures in mathematical modelling: e.g. supply chains, production systems, social systems, the internet or traffic flows are important applications.

Network analysis, simulation and optimization, whether assuming flux in equilibrium or dynamic, sources and demands deterministic or at random, is a broad and vivid research field of many mathematicians. Four experts from the United States, England and Germany will provide survey talks and current research topics around networks with particular emphasis on how to cope with uncertainty.

The objective of the Felix Klein Academy autumn workshop is to stimulate research and to discuss applications in the Kaiserslautern mathematics family consisting of the University's Math Department and the Fraunhofer Institute for Industrial Mathematics. There will be enough space for discussions and for sharing problems in the specified domain.



S. Krumke      K.-H. Küfer      H. Neunzert

Wednesday, September 27 <sup>th</sup>		
8:30	Opening Words by Sven Krumke, Karl-Heinz Küfer and Helmut Neunzert	public lectures
9:00	<b>Queryable Uncertainty</b> , Thomas Erlebach	
9:45	<b>Scheduling Uncertain Jobs with Testing</b> , Thomas Erlebach	
10:30	Coffee break	
11:00	<b>Basic Models and Algorithms in Stochastic Optimization</b> , Aravind Srinivasan	
11:45	<b>Algorithms in Online Advertising</b> , Aravind Srinivasan	
12:30	Lunch	
13:30	Social event (only with personal invitation)	
Thursday, September 28 <sup>th</sup>		
9:00	<b>Network graph describing matrices and their properties</b> , Caren Tischendorf	public lectures
9:45	<b>Modeling of flow networks with differential (algebraic) equations</b> , Caren Tischendorf	
10:30	Coffee break	
11:00	<b>Computational Network Science and Socially coupled systems</b> , Madhav Marathe	
11:45	<b>Graphical Dynamical Systems and Interaction-Based Computing</b> , Madhav Marathe	
12:30	Lunch	
14:30	<b>Closed invited sessions</b>	
Friday, September 29 <sup>th</sup>		
9:00	<b>Exploration of Temporal Graphs</b> , Thomas Erlebach	public lectures
9:45	<b>Uncertainty modeling for networks</b> , Caren Tischendorf	
10:30	Coffee break	
11:00	<b>Algorithms for Stochastic Packing Problems</b> , Aravind Srinivasan	
11:45	<b>Simulation, Optimization and control of contagions in co-evolving networks</b> , Madhav Marathe	
12:30	Lunch	